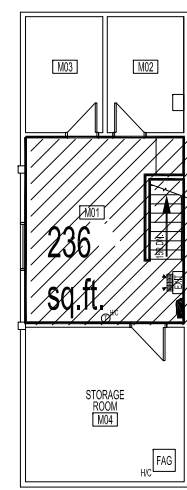
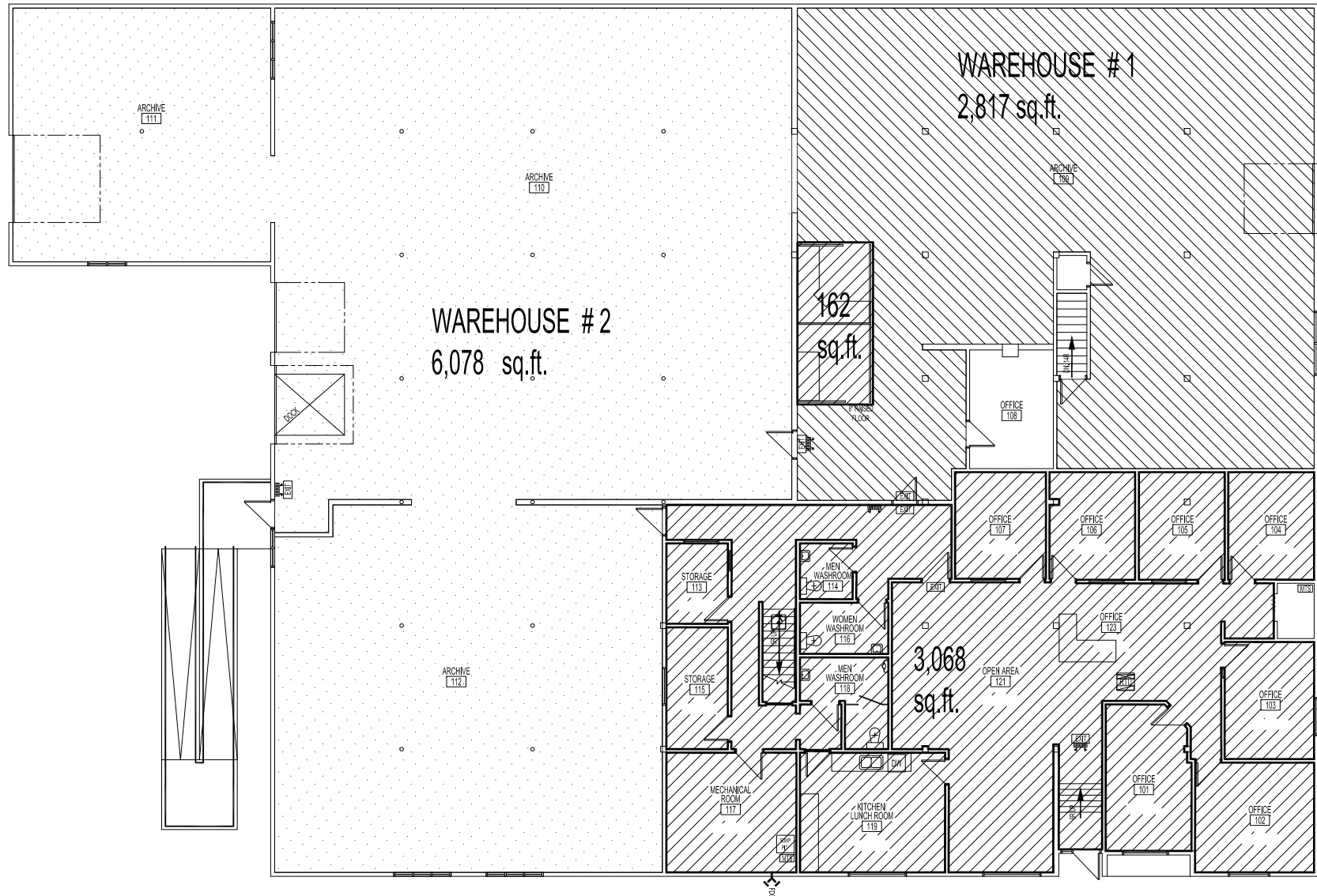


ADDRESS: 50 MYRTLE STREET PROJECT No: SHEET TITLE: BASEMENT, MAIN AND MEZZANINE FLOOR PLANS DATE: 2016.03.17 FILE NAME: 0050mt01

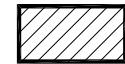
NOTES:



MEZZANINE FLOOR PLAN
SCALE: 1/8"=1'-0"

MAIN FLOOR PLAN
SCALE: 1/8"=1'-0"

TOTAL AREA OF MAIN FLOOR OFFICE SPACE & MEZZANINE TO CLEAN = 3,466 sq.ft.



TOTAL AREA OF MAIN FLOOR WAREHOUSE #1 TO CLEAN = 2,817 sq.ft.



TOTAL AREA OF MAIN FLOOR WAREHOUSE #2 TO CLEAN = 6,807 sq.ft.



No.	REVISION/DESCRIPTION	BY	DATE
SEAL			

DRAWN	TO	CHECKED	DESIGNED	APPROVED
DATE 2016.03.17	USER	APPROVAL		

THE CITY OF WINNIPEG
PLANNING, PROPERTY AND
DEVELOPMENT DEPARTMENT
MUNICIPAL ACCOMMODATIONS DIVISION
3-65 GARRY STREET, R3C 4K4

PROJECT
CITY OF WINNIPEG
ARCHIVES AND RECORDS CONTROL

50 MYRTLE STREET
SHEET TITLE
BASEMENT FLOOR PLAN
MAIN FLOOR PLAN
MEZZANINE FLOOR PLAN 0050MT01

SCALE	PROJECT No:	SHEET No:
AS SHOWN	190-2016	A1

DRAWING SHEET SIZE: A1 (841mm x 594mm) PLOT 1:1